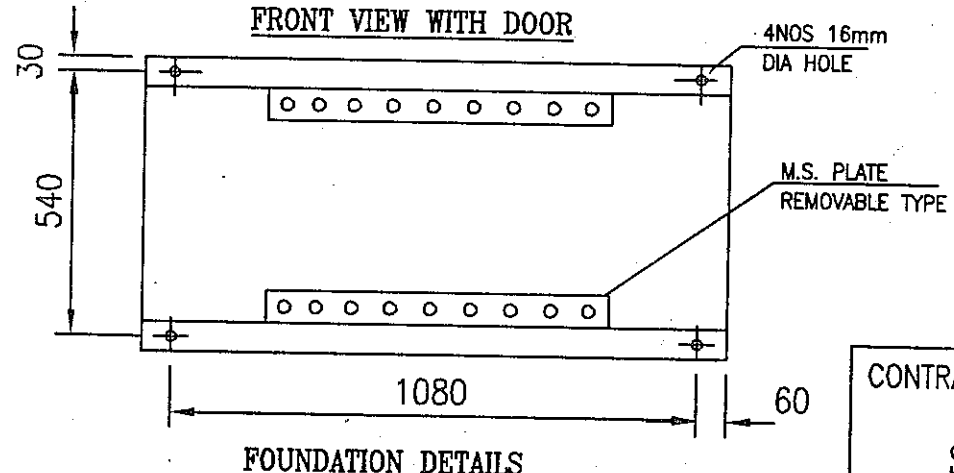


**APPROVED**  
*M. K. Kumar*  
 CEE (P&C)  
 K.P.T.C.L Bangalore.

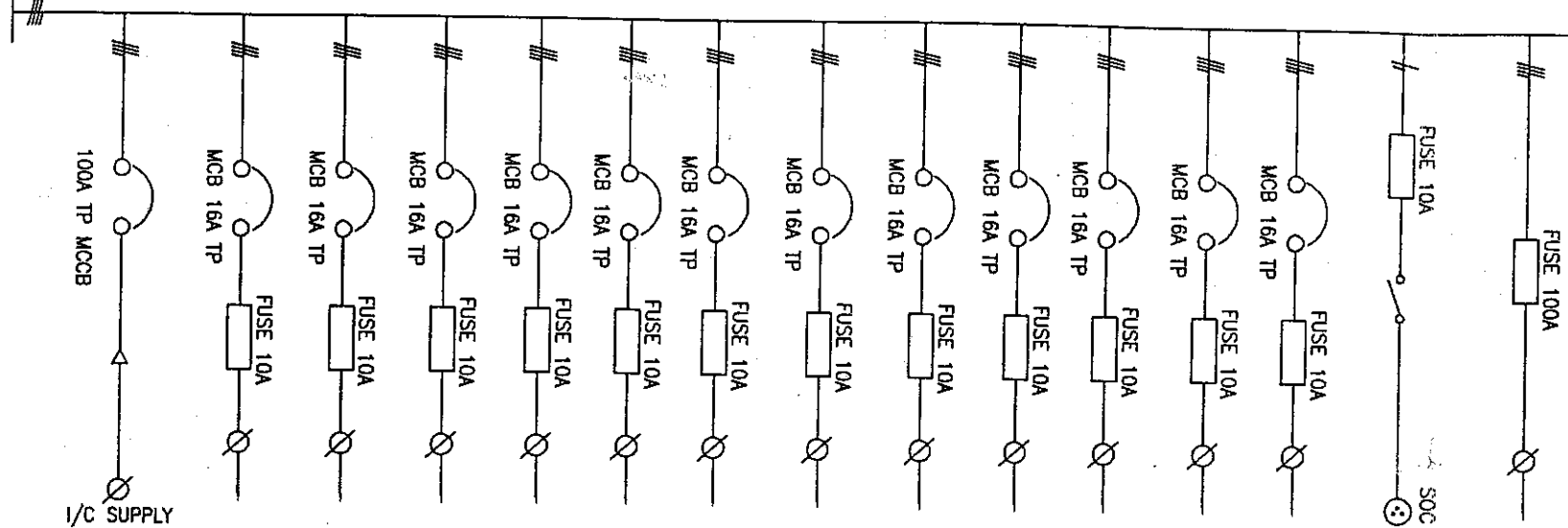


- NOTE :-
1. ALL DIMENSIONS ARE IN MM. ONLY UNLESS OTHERWISE SPECIFIED.
  2. PANELS ARE STRUCTURE / FLOOR MOUNTING DUST & VERMIN PROOF, INDOOR TYPE
  3. FABRICATION : 2.5mm (16SWG) CRCA SHEET STEEL FOR BODY FOR DOORS & SKELETON . 1.6mm (16SWG) FOR INSIDE PARTITION
  4. BOTTOM PLATE : BOLTED, REMOVABLE TYPE UNDRILLED 3mm THICK MS SHEET.
  5. BASE : ISMC : 100x50mm
  6. BUSBARS : ELECTROLYTIC ALUMINIUM : 120x6mm FOR PHASE & NEUTRAL
  7. PAINT : 7 TANK CHEMICAL PROCESS TREATMENT, RED OXIDE PRIMER INTERIOR STOVED ENAMAL WHITE INTERIOR SYSTHETIC ENAMAL LIGHT GREY, SHADE 631 OD IS:5
  9. DEGREE OF PROTECTION : IP 44
  10. CABLE ENTRY : BOTTOM ENTRY
  11. GASKET WILL BE USED FOR DOORS AND GLAND PLATES IS NEOPRENE MATERIAL
  12. QUANTITY : 01 NO.

CONTRACTOR : <b>SHREEM CAPACITORS P. LTD</b>		BANAVATHY AND COMPANY B-238,6TH CROSS, 1ST STAGE PEENYA INDUSTRIAL ESTATE, BANGALORE - 560 058		
CLIENT: <b>M/S K.P.T.C.L BANGALORE</b>		<b>AC DISTRIBUTION BOARD - DOUBLE FRONT</b>		
PROJECT: <b>ESTABLISHING 2X100MVA, 220/110KV &amp; 1 X 10 MVA, 110/11KV S/S AT ATHANI</b>		DRG.NO. BNT/LTAC/DF/2006702 DT : 06.10.2006	SCALE : N T S	
DWA NO : <b>CEE/T&amp;P/TL&amp;SS-162/542</b>	<b>DATED 25.10.06</b>	<i>VVK</i>	VNK	1 of 2
		DRN	CHD SUB	
		APPROVED		SHEET

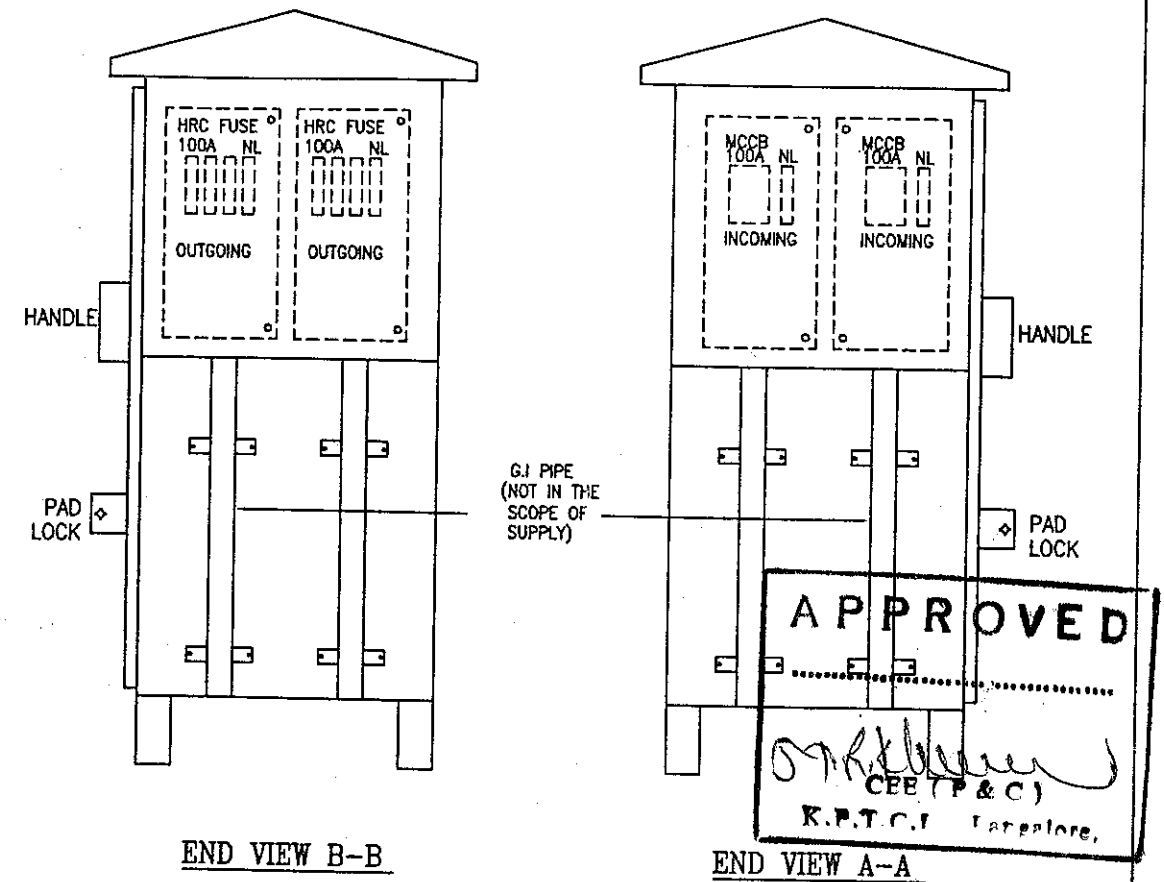
TYPICAL SINGLE LINE DIAGRAM

AL B/B 31.5KA FOR 1 SEC.  
SIZE 20x6mm



BILL OF MATERIAL

S. NO.	DESCRIPTION	QTY	MAKE
1.0	MCCB, 100A, TP, 20KA	2 NOS	HAVELLS / SCHNEIDER / C&S
2.0	HRC FUSE LINK WITH BASE , 100A	6 NOS	GE / C&S / STANDARD
3.1	MCB, 16A, TP	24 NOS	PROTEC / BENTEC / SIEMENS
3.2	HRC FUSE LINK WITH BASE 10A	72 NOS	GE/C&S/STANDARD/NANDI
4.1	IND. PLUG & SOCKET 15/5A 3PIN, 240V	2 NOS	BCH / CGL / REPUTED
4.2	ON-OFF SWITCH, 15A, 2POLE, 240V	2 NOS	REPUTED
4.3	HRC FUSE LINK WITH BASE 10A	2 NOS	GE / C&S / STANDARD/NANDI
5.0	TERMINALS NUT TYPE M6	120 NOS	ELMEX



CONTRACTOR :		BANAVATHY AND COMPANY	
SHREEM CAPACITORS P. LTD		B-238,6TH CROSS, 1ST STAGE PEENYA INDUSTRIAL ESTATE, BANGALORE - 560 058	
CLIENT:		AC DISTRIBUTION BOARD - DOUBLE FRONT	
M/S K.P.T.C.L BANGALORE		DRG.NO. BNT/LTAC/DF/2006702	
PROJECT:		SCALE : N T S	
ESTABLISHING 2X100MVA, 220/110KV & 1 X 10 MVA, 110/11KV S/S AT ATHANI		DT : 06.10.2006	
DWA NO :			
CEE/T&P/TL&SS-162/542			
DATED 25.10.06			
DRN	CHD	SUB	APPROVED
RGB	VNK		2 of 2
			SHEET