

CUSTOMER - OMICRON ENGINEERS GULBARGA

ITEMS 220V DC DISTRIBUTION BOARD (INDOOR TYPE)

END USER - KARNATAKA POWER TRANSMISSION CORPORATION LIMITED

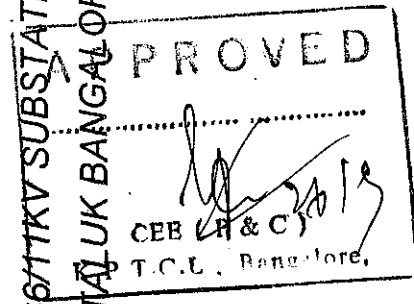
PROJECT ESTABLISHING 2X100 MVA, 220/66 KV & 2X31.5MVA 66/11KV SUBSTATION AT VRISHABHAVATHI VALLEY I IN BANGALORE SOUTH TALKUK BANGALORE URBAN DIST.

SHEET THICKNESS - 2 MM THK. CRCA
GLAND PLATE - 3MM THK.
BASE FRAME - C TYPE 75 x 50 x 3MM

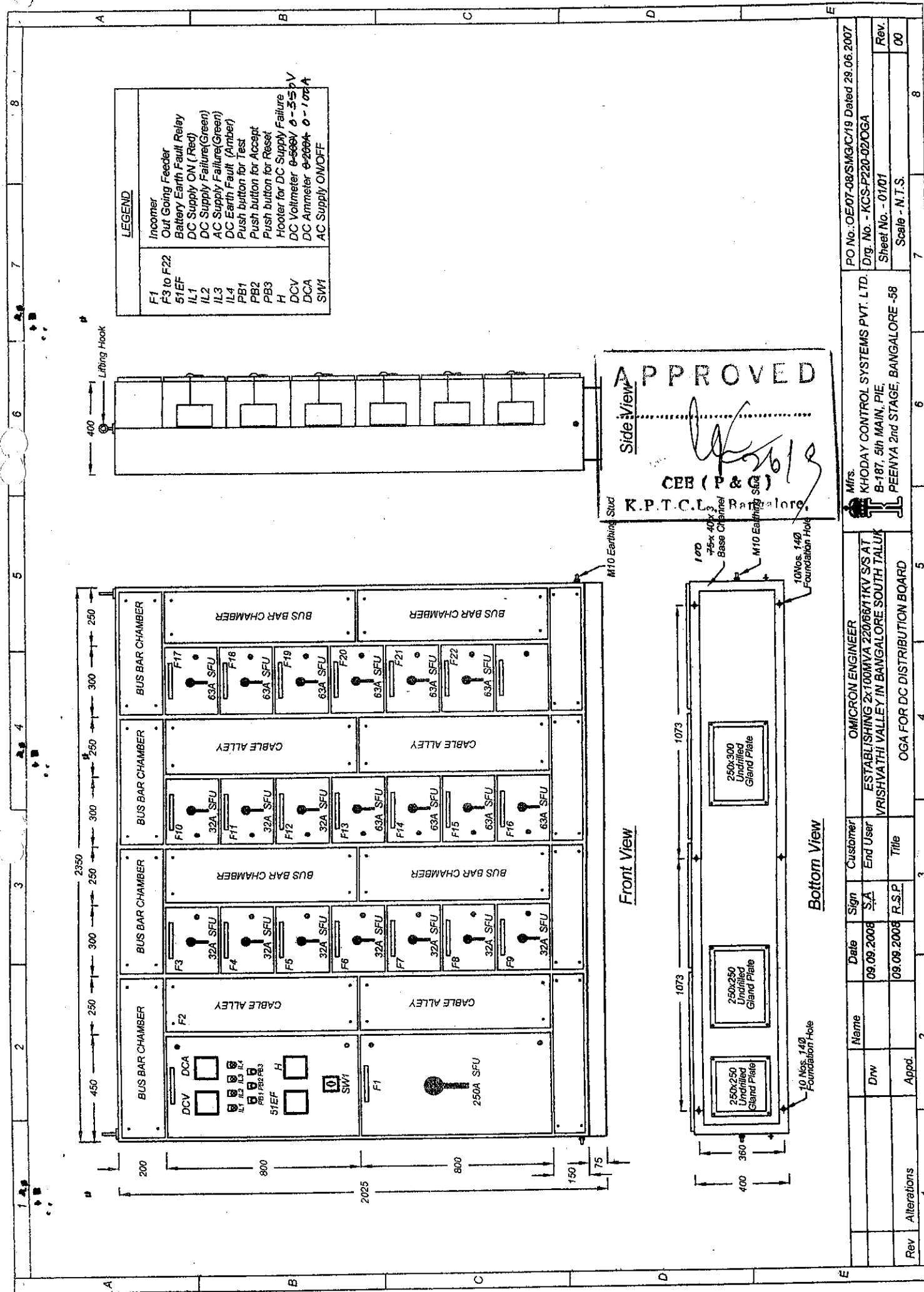
PAINT SHADE - INTERIOR - GLOSSY WHITE
- EXTERIOR - OPLINE GREEN, Shade No. 275, IS : 5
- BASE FRAME - BLACK

PAINTING METHOD - POWDER COATING

QUANTITY - 01 Nos.



Rev	Alterations	Drw	Name	Date	Sign	Customer	Title		Mfrs.		PO No.		
			SHIVAPPA.H	09.08.2008	S.A	End User	ESTABLISHING 2x100MVA 220/66/11KV S/S AT VRISHAVATHI VALLEY IN BANGALORE SOUTH TALKUK		KHODAY CONTROL SYSTEMS PVT. LTD. B-187, 5th MAIN, PIE, PEENYA 2nd STAGE, BANGALORE -58		OE07-08/SMGC/19 Dated 29.06.2007		
			SRIPATHY	09.09.2008	R.S.P		MAIN SHEET FOR DC DISTRIBUTION BOARD				Drq. No. - KCS-P220-02MS		
											Sheet No. - 01/01		
											Scale - N.T.S.		
1							2	3	4	5	6	7	8



LEGEND

F1	Incomer
F3 to F22	Out Going Feeder
51EF	Battery Earth ON (Red)
IL1	DC Supply Failure(Green)
IL2	AC Supply Failure(Green)
IL3	DC Earth Fault (Amber)
IL4	AC Earth Fault (Amber)
PB1	Push button for Test
PB2	Push button for Accept
PB3	Push button for Reset
H	Hooker for DC Supply Failure
DCV	DC Voltmeter 0-550V 0-35A
DCA	DC Ammeter 0-200A 0-100A
SW1	AC Supply ON/OFF

APPROVED

Side View

CEE (P & G)
K.P.T.C.L. Bangalore

2019

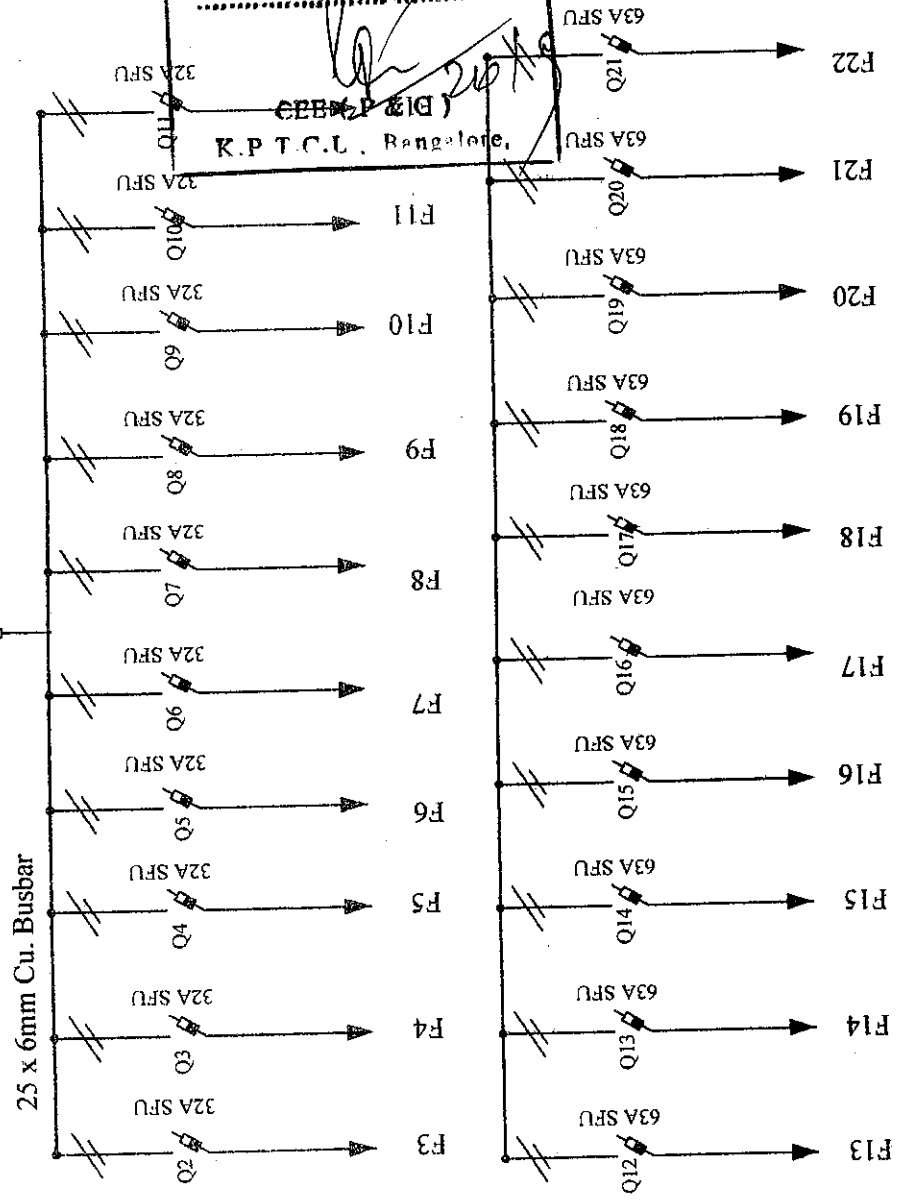
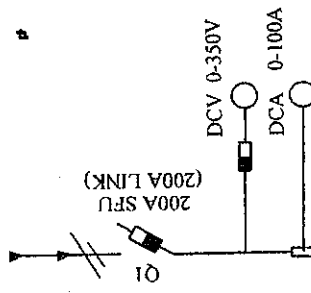
Rev	Alterations	1	2	3	4	5	6	7	8
Drw	Appd.								
Name	Date	Sign	Customer	Title					
	09.09.2008	SA	OMICRON ENGINEER	OGA FOR DC DISTRIBUTION BOARD					
	09.09.2008	R.S.P.	ESTABLISHING 2x100MVA 220/66/11KV S/S AT VRISHVATHI VALLEY IN BANGALORE SOUTH TALUK	KHODAY CONTROL SYSTEMS PVT. LTD. B-187, 5th MAIN, PIE, PEENYA 2nd STAGE, BANGALORE -58					
				PO No. - OE/07-08/SM/GC/19 Dated 29.06.2007 Dir. No. - KCS-P220-02/OGA Sheet No. - 01/01 Scale - N.T.S.					

APPROVED

(Signature)
K.P.T.C.L. Bangalore,

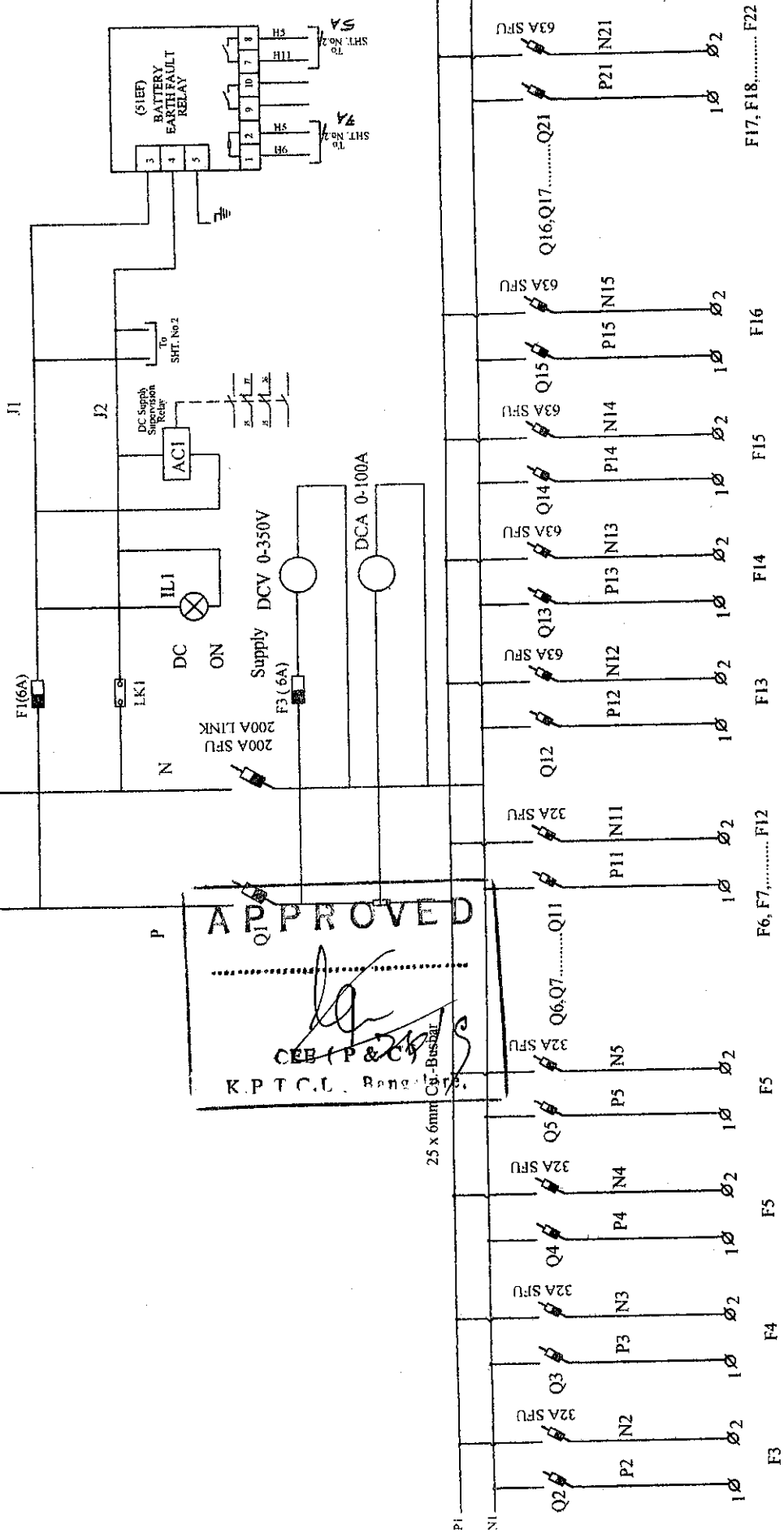
25 x 6mm Cu. Busbar

INCOMER-220V DC



Rev	Alterations	7	8
Drw	Ckd. & Appd.	7	8
Name	SHIVAPPA.H	Date	09.09.2008
Sign	S.A	Customer	End User
Sign	R.S.P	Customer	Title
Date	09.09.2008	Mrs. OMICRON ENGINEER	
Name		KHODAY CONTROL SYSTEMS PVT. LTD.	
Address		ESTABLISHING 2x100MVA 220/66/11KV SIS AT KRISHNAPUR VALLEY IN BANGALORE SOUTH TALUK B-187, 5th MAIN, PIE.	
Title		PEENYA 2nd STAGE, BANGALORE -58	
Project		SLD FOR DC DISTRIBUTION BOARD (INDOOR)	
Scale		N.T.S.	
Sheet No.		01/01	
Dir. No.		KCS-P220-02/P - SLD	
PO No.		OE/07-08/SMG/C/19 Dated 29.06.2007	

INCOMER
220V DC SUPPLY

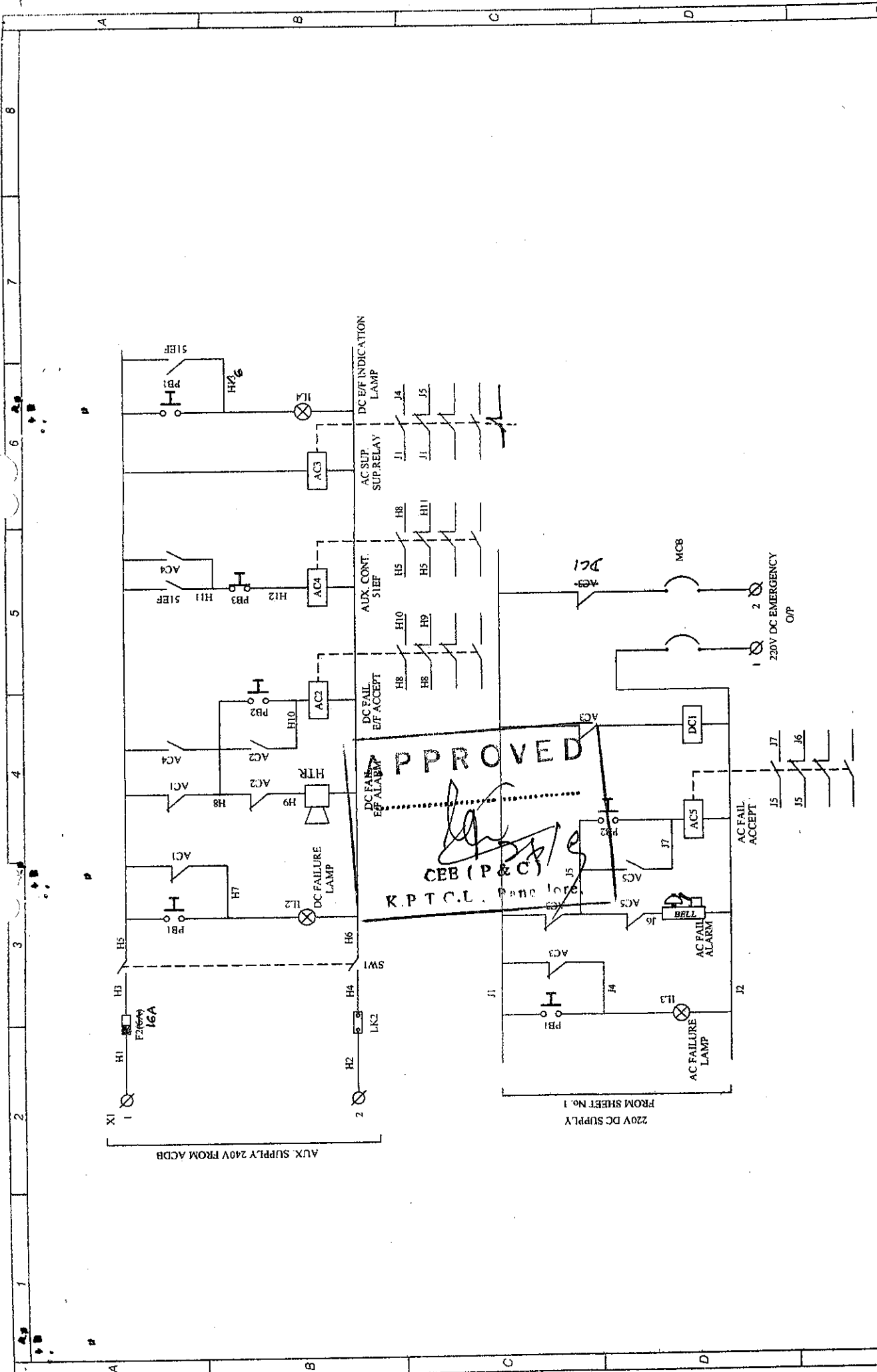


APPROVED

[Signature]

K.P.T.C.L. Bang. Cbr-Busbar

Rev	Alterations	1
Appd.		2
Chd.		3
Drw		4
Name	SHIVAPPALH	5
Date	09.09.2008	6
Sign	S.A	7
Customer	End User	8
OMICRON ENGINEER		
Mfrs.		
KHODAY CONTROL SYSTEMS PVT. LTD.		
ESTABLISHING 2x100MVA 220/66/11KV SISAT		
VRISHVA THI VALLEY IN BANGALORE SOUTH		
B-187, 5th MAIN, PIE,		
PEENYA, 2nd STAGE, BANGALORE - 58		
SCHEMATIC FOR DC DISTRIBUTION BOARD		
PO No.	OE107-08/SMG/IC/19	Dated 29.08.2007
Drig. No.	KCS-P220-02L	5
Sheet No.	01/02	
Scale	N.T.S.	



APPROVED

KPTCL. Bangalore

CEB (P&C)

220V DC SUPPLY
FROM SHEET No. 1

PO No. - OE/07-08/SMG/C/19 Dated 29.06.2007
Drwg. No. - KCS-P220-02
Sheet No. - 02/02
Scale - N.T.S.

Mfrs.	KHODAY CONTROL SYSTEMS PVT. LTD.
Customer	ESTABLISHING 2x100MVA 220kV/11kV/SIS AT VRISHVATHI VALLEY IN BANGALORE SOUTH TALKIB-187, 5th MAIN, PIE, PEENYA 2nd STAGE, BANGALORE -58

Name	SHIVAPPA.H	Sign	S.A	Date	09.09.2008
Drw	SRIPATHY	Sign	R.S.P	Date	09.09.2008

Customer	OMICRON ENGINEER
End User	SRIPATHY
Title	SCHMATIC DIAGRAM FOR DC DB
Rev	Alterations

BILL OF MATERIAL

SL No.	Description	Make	Qty.
1	200 Amps SFU with 200Amps HRC fuse link	C&S/Indo. Asian/HPL	01 No.
2	32 Amps SFU with 32 Amps HRC fuse link	C&S/Indo. Asian/HPL	10 Nos.
3	63 Amps SFU with 63 Amps HRC fuse link	C&S/Indo. Asian/HPL	10 Nos.
4	Battery Eart Fault Relay, Type : BEF	JVS/ Reputed	01 No.
5	230V AC Indicating Lamp, LED Type (Green) V DC Supply Failure	Vaishno/Venson/Eq.	01 No.
6	22.5 Dia, 220V DC Indicating Lamp led Type (Green) AC Supply Failure	Vaishno/Venson/Eq.	01 No.
7	22.5 Dia, 220V. DC Indicating Lamp LED Type (Red) DC Supply on	Vaishno/Venson/Eq.	01 No.
8	220 V DC Bell for AC Supply Failure	EDISON	01 No.
9	230V AC Electronic Hooter for DC Supply Failure	Alan/PowerGuard/Eq.	01 No.
10	22.5 Dia Push button with 2NO Contact Element (Blue) for Test	Vaishno/Venson/Eq.	01 No.
11	22.5 Dia Push button with 2NO Contact Element (Yellow) for Accept	Vaishno/Venson/Eq.	01 No.
12	22.5 Dia Push button with 2NC Contact Element (Black) reset for E/F Relay	Vaishno/Venson/Eq.	01 No.
13	Aux. Contactor 9Amps, Coil Voltage : 220V DC with 2NO+2NC Contacts	TC/CGL/Siemens	02 Nos.
14	Aux. Contactor 9Amps, Coil Voltage : 230V AC with 2NO+2NC Contacts	TC/CGL/Siemens	03 Nos.
15	2 Position ON/OFF Selector Switch for control circuit	Saizer/GT	01 No.
16	25 x 6mm Cu. Busbar	-	1 Lot
17	25 x 3mm Copper Earth Busbar	-	1 Lot
18	Terminal Block CSTS RN6 NUT & STUD TYPE, 8 mm, 14.00 V Grade	Connectwell	As Reqd
19	DC Voltmeter 96 Sq.mm Size 0-350 DC	ELC/MECO/AE	01 Nos
20	Aux. Contactor 9A Coil Voltage 230V AC 2NO+3NC	TC/CGL/ Siemens	01 Nos
21	DC Ammeter 96 Sq.mm Size 0-100A	EIC/Meco/AE	01 Nos
22	16Amps fuse base with 2Amps fuse link	Switron/GE	02 Nos
23	16Amps Neutral link	Reputed	02 Nos
24	Emergency DC Contactor 220V DC COIL 2NO+2NC	TC/CGL/ Siemens	01Nos
25	Emergency DC 10A MCB O/P 220V DC	ABB/K	01Nos

APPROVED

C
B
A

IL4 - DC Earth Fault,
230V AC, 10 mm φ,
LED Type Indicating
Lamp (Amber) = 01 No.

PO No. : 0E07-08/S/M/G/C/19 Dated 29.08.2007	Rev.	00
Dr. No. - KCS-P220-02/ B.O.M	Sheet No. - 01/01	Scale - N.T.S.
Mfrs. KHODAY CONTROL SYSTEMS PVT. LTD. B-187, 5th MAIN, PIE, PEENYA 2nd STAGE, BANGALORE -58	Customer: OMIGRON ENGINEER	Customer: ESTABLISHING 2x100MVA 220/66/11KV S/S AT VRISHVATHI VALLEY IN BANGALORE SOUTH TALUK
Signature: SRIPATHY	Date: 09.09.2008	Signature: S.A
Title: R.S.P	Title: S.A	Title: S.A
Appd. & Ckd.	Appd. & Ckd.	Appd. & Ckd.
1	2	3
4	5	6
7	8	9